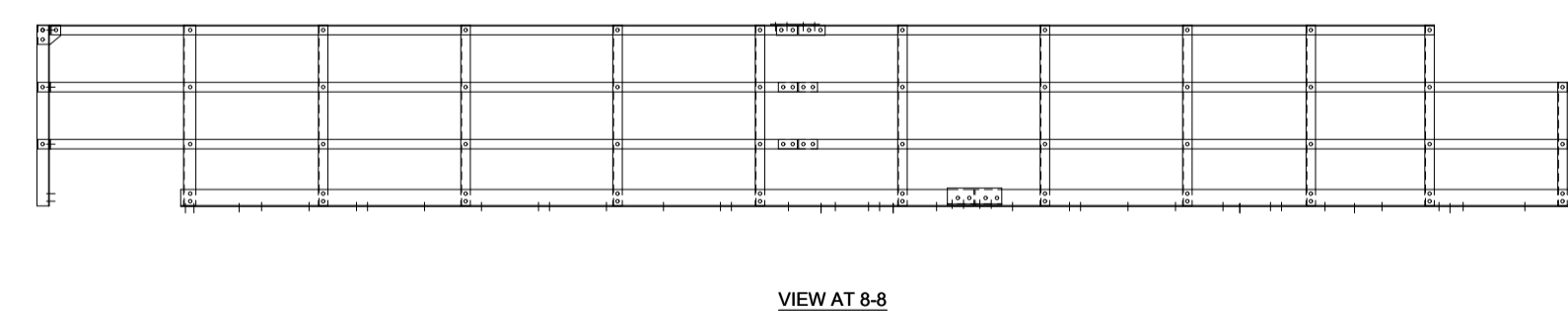
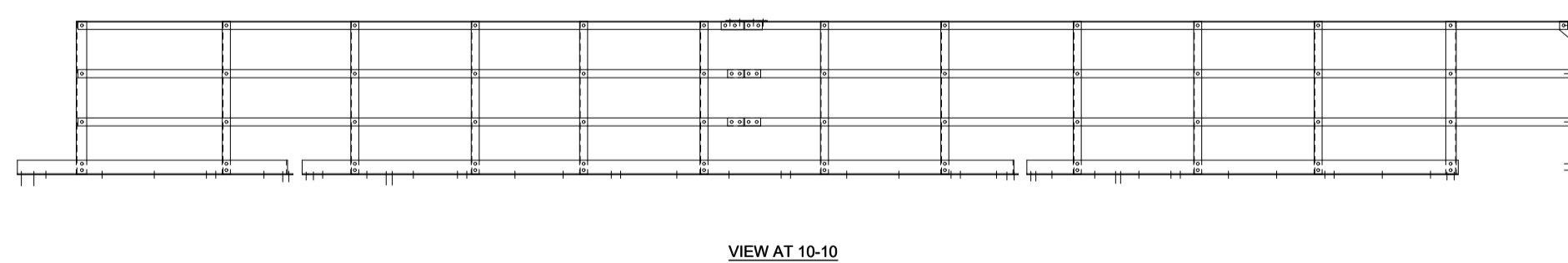
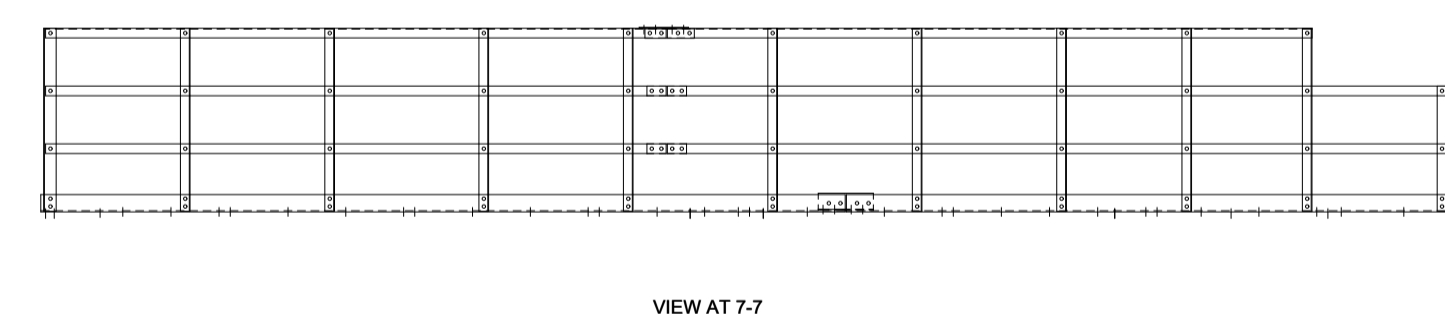
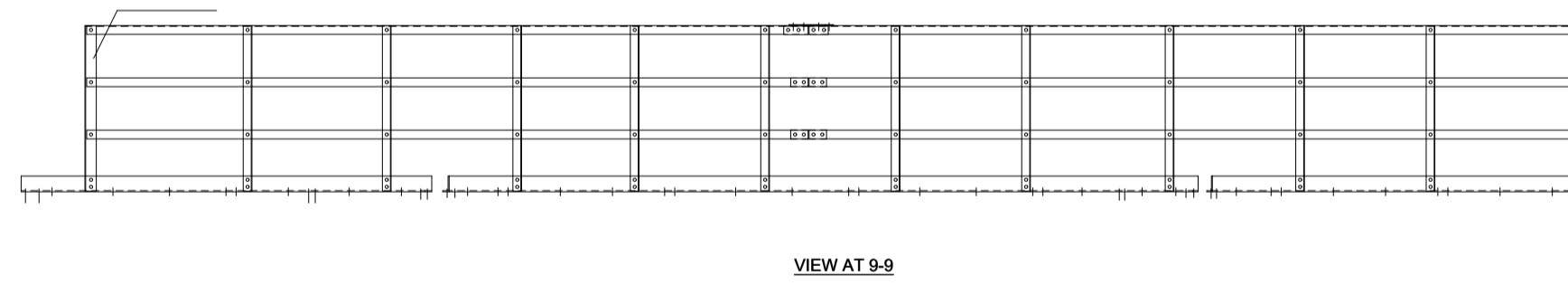
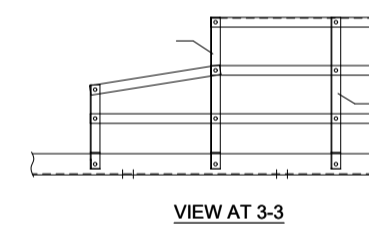
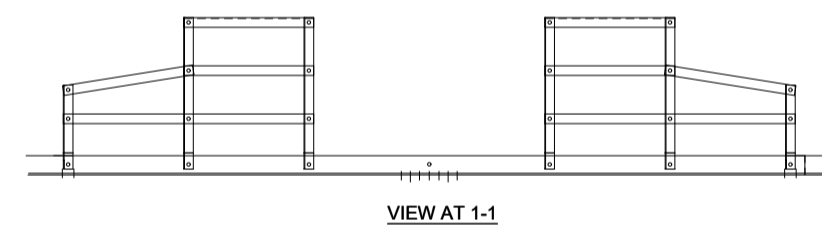
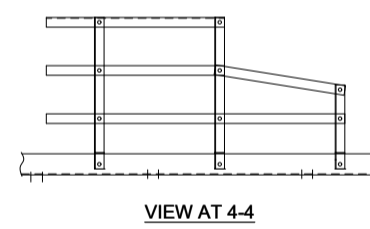
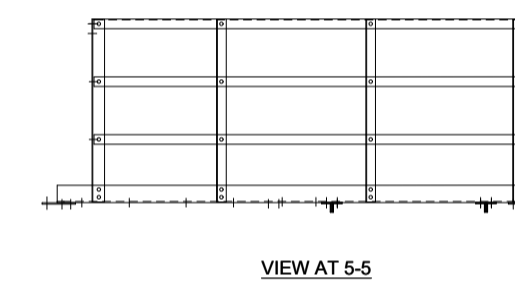
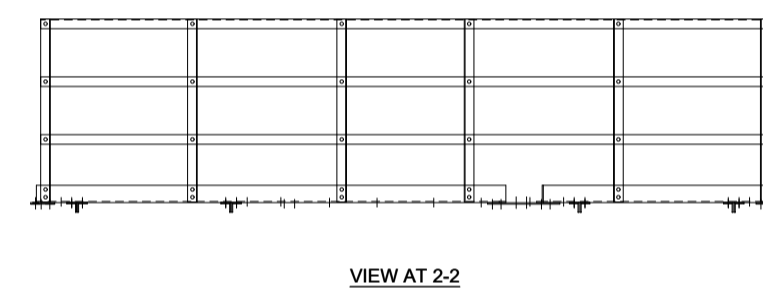
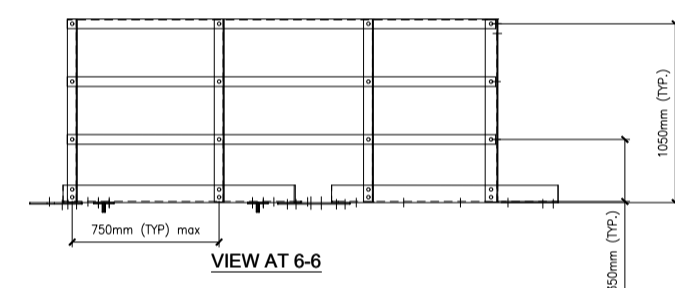
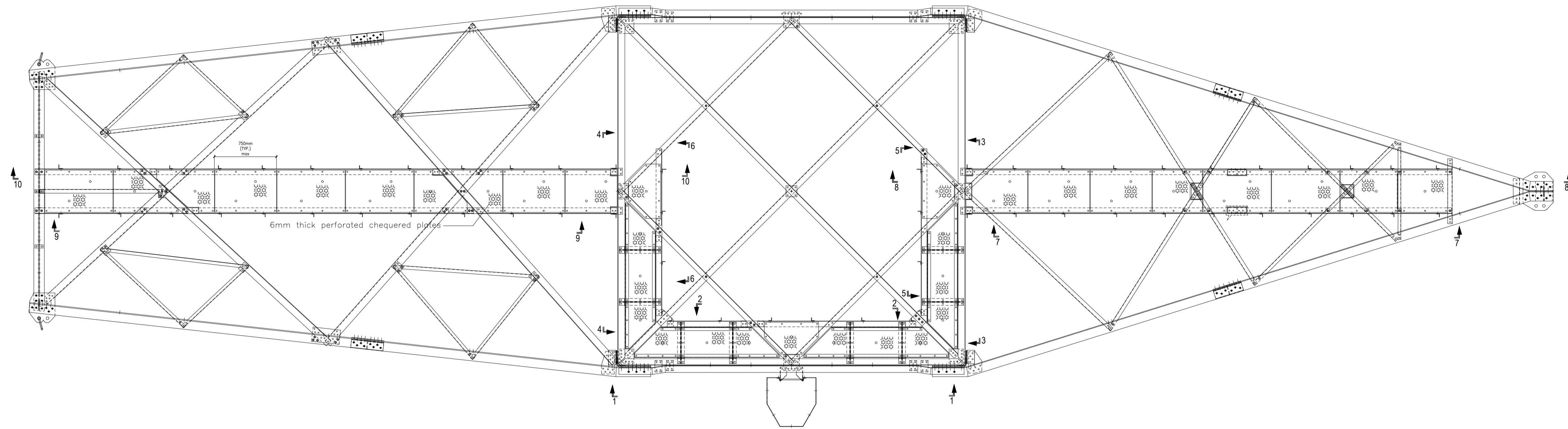


NOTE: 1) Number of bolts shown are indicative.



TYPICAL SKETCH FOR LADDER

DRAWN BY		DATE		DRAWING NO.	
CHECKED BY				CC:ENGG:TL/LADDER	
APPROVED BY				REV	0

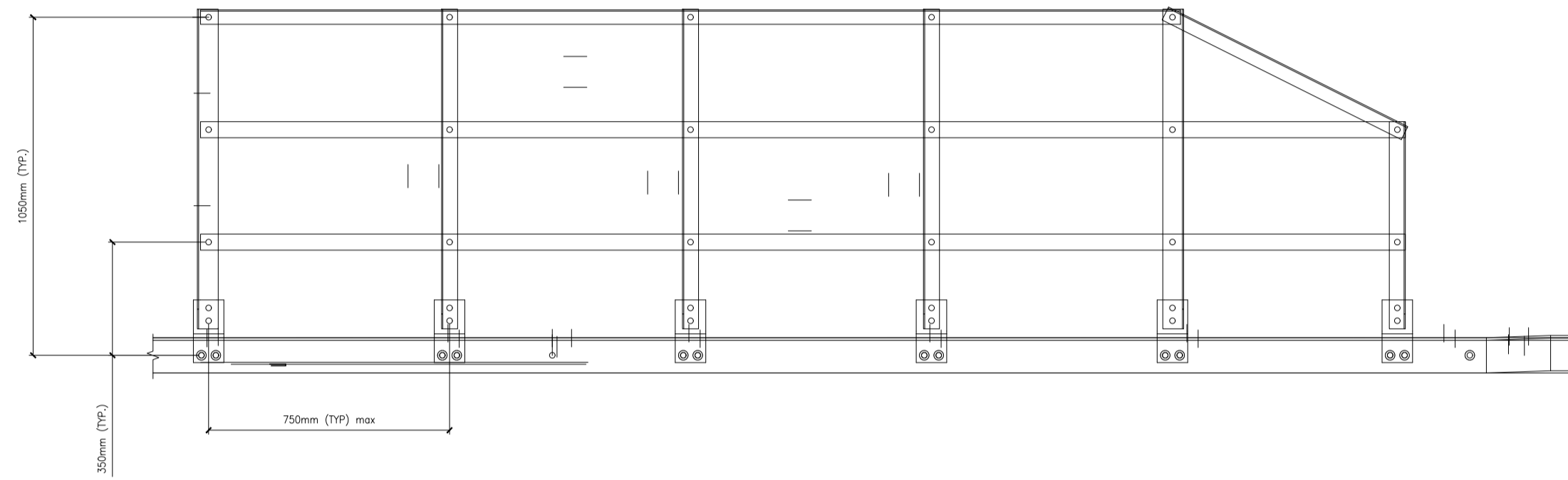


- NOTE: 1) Number of bolts shown are indicative.
 2) Railing to be provided on both sides
 3) Platform width to be kept 750mm

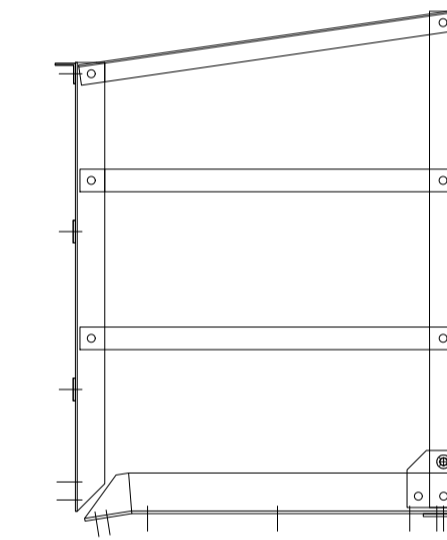


TYPICAL SKETCH FOR
 PLATFORM AT CROSS ARM & PEAK LEVELS

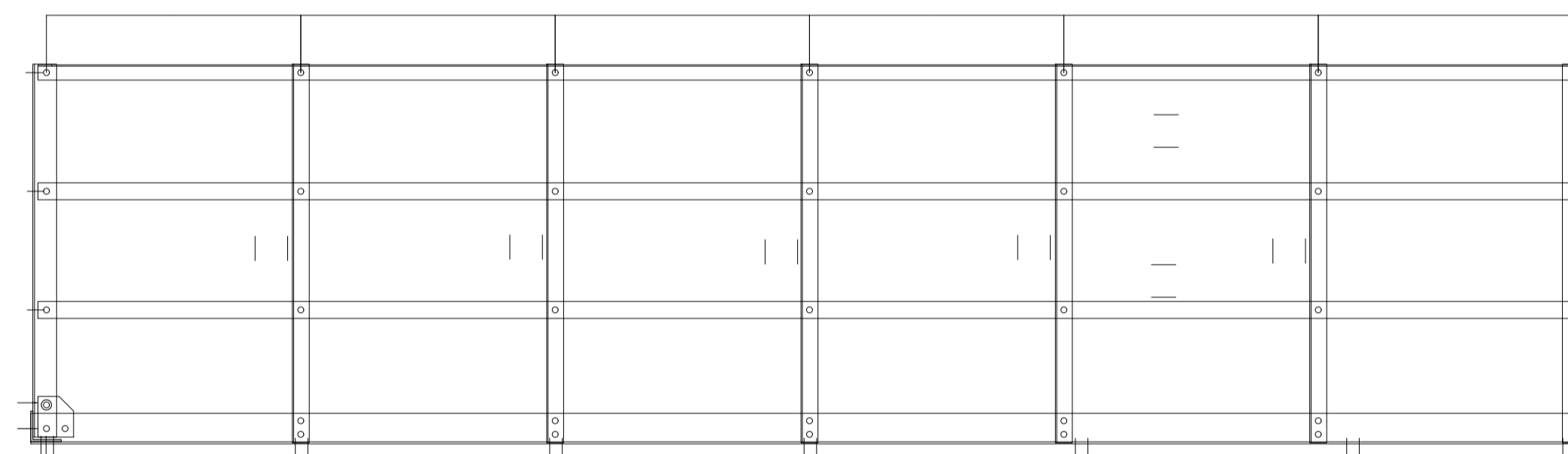
DRAWN BY		DATE		DRAWING NO.
CHECKED BY				CC:ENG:TL/PLATFORM
APPROVED BY	RK			REV 0



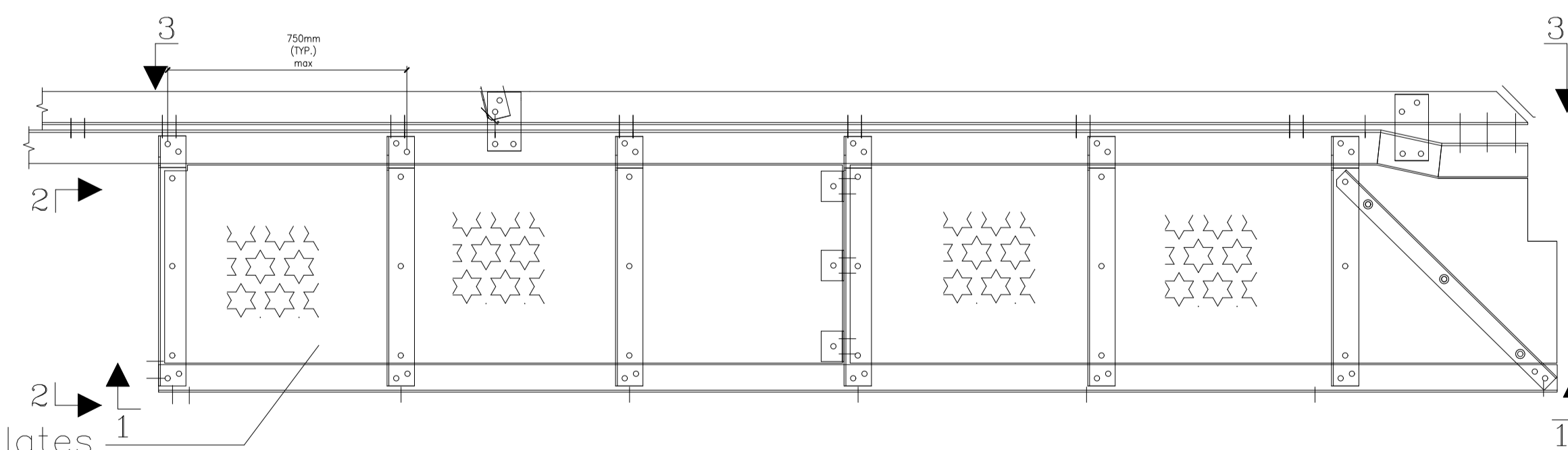
VIEW 3-3



VIEW 2-2



VIEW 1-1



6mm thick perforated chequered plates

DETAIL OF PLATFORM AT BODY/CAGE LEVEL

- NOTE: 1) Number of bolts shown are indicative.
 2) Railing to be provided on both sides
 3) Platform width to be kept 750mm



TYPICAL SKETCH FOR
 PLATFORM AT BODY/CAGE LEVEL

DRAWN BY		DATE		DRAWING NO.	
CHECKED BY				CC:ENGG:TL/PLAT/BDCA	
APPROVED BY				REV	0